



Antigen and Antibody Catalogue For Veterinary Diagnosis



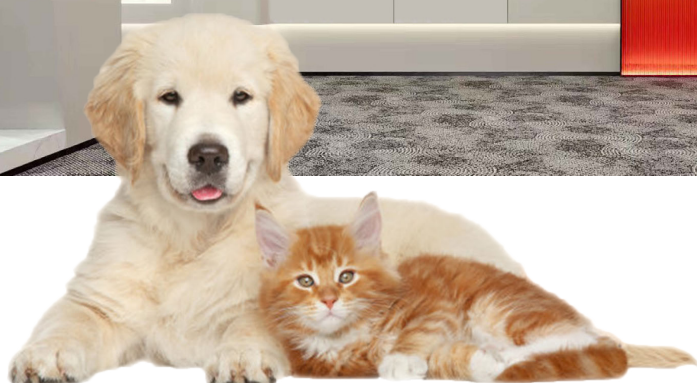
BIO-MAPPER

Explore The Art Of Living Together

Company Profile

Bio-Mapper Technology Co., Ltd., was founded in 2018, is a professional supplier of in vitro diagnostic (IVD) reagents raw materials. It is committed to providing high-quality antigens, antibodies and other bioactive raw materials and related auxiliary products services for global IVD reagent manufacturers.

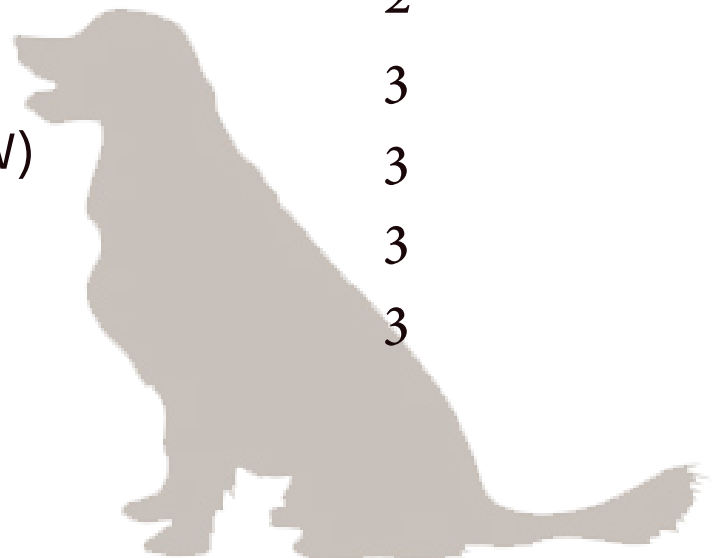
Bio-Mapper takes immunodiagnosis as the technical core, mainly involving the fields including major animal infectious diseases, animal respiratory diseases, animal digestive tract diseases and animal allergen series. It has established a comprehensive and leading diagnostic R & D, production and application of platform, and implemented a perfect technology development process. Bio-Mapper covers many application platforms, such as ELISA, LF,IB, IFA,LTIA, WB, CLIA, CMIA,efficiently serves and improves the development of IVD industrial products and product performance level in China.Bio-Mapper will supply the high quality products and complete solution to the industry as well as the shared-values.Bio-Mapper hopes that will be benefit more people and be advanced to cause of human-health by making the developments of diagnostic technologies.



Contents

Canine Diagnostic

Canine Parvovirus(CPV)	1
Canine Distemper Virus(CDV)	1
Canine C-Reactive Protein(C-CRP)	1
Canine Coronavirus(CCV)	1
Canine Rota Virus(Rota)	2
Rabies Virus(Rv)	2
Toxoplasma(TOXO)	2
Canine Serum Amyloid A(C-SAA)	2
Canine Adeno Virus(CAV)	2
Canine Influenza Virus(CIV)	3
Canine Heartworm Virus(CHW)	3
Mouse anti-Canine IgG	3
Mouse anti-Canine IgM	3



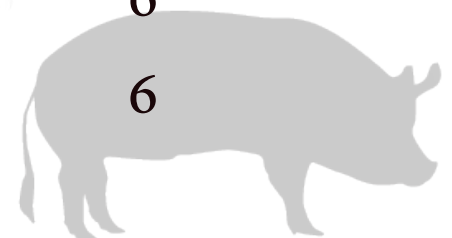
Feline Diagnostic

Feline Parvovirus(FPV)	4
Feline Immunodeficiency Virus(FIV)	4
Feline Calicivirus(FCV)	4
Feline Herpes Virus(FHV)	4
Feline Coronavirus Virus(FCoV)	5
Feline Leukemia Virus(FeLV)	5
Feline Giardia Virus(Giardia)	5
Mouse anti-Feline IgM	5
Feline Serum Amyloid A(F-SAA)	5



Swine Diagnostic

Porcine Reproductive and Respiratory Syndrome Virus(PRRSV)	6
Classical Swine Fever Virus(CSFV)	6
African Swine Fever Virus(ASFV)	6
Pseudorabies Virus(PRV)	6

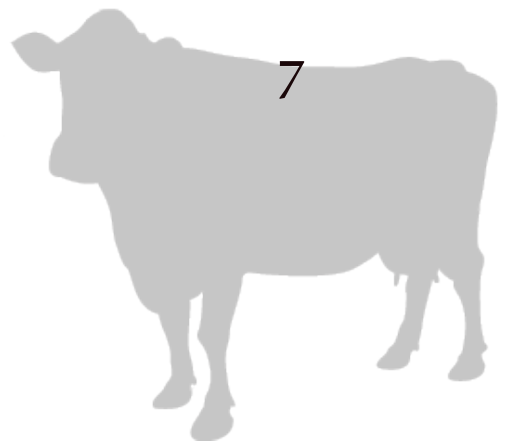


Bovine Diagnostic

Foot and Mouth Disease Virus(FMDV) 7

Infectious Bovine Rhinotracheitis Virus(IBR) 7

Bovine Viral Diarrhea Virus(BVDV) 7



Goat Diagnostic

Peste Des Petits Ruminants(PPR) 8

Sheep/Goat Pox Virus(Qrf) 8



Other Diagnostic

Hydatid Disease 9

Leptospirosis 9

Brucella 9



Canine Viral Infectious Disease

With the rapid development of urban economy and the continuous improvement of people's living standards, the dog breeds and numbers are raised by residents are increasing. Humans are frequently exposed to animals, and the risk of occurrence and transmission of various of zoonotic diseases gradually increases, which directly or indirectly endangers the health and life safety of human society. Zoonoses are mainly transmitted by respiratory tract, digestive tract, skin contact and arthropods, and are characterized by divergence and prevalence.

Common canine diseases are canine distemper, parvovirus, parainfluenza, canine adenovirus type 1 (infectious hepatitis), adenovirus type 2 (infectious laryngotracheitis), coronavirus, leptospira caniola, rabies and so on. Through rapid detection of canine viral diseases, the risk of zoonosis can be effectively reduced and the spread of epidemic diseases can be controlled.

Canine Parvovirus(CPV)

Product Name	Catalog	Type	Host/Source	Usage	Applications
CPV Antibody	BMGCPV11	Monoclonal	Mouse	Capture	LF, IFA, IB, ELISA, CMIA, WB
CPV Antibody	BMGCPV12	Monoclonal	Mouse	Conjugation	LF, IFA, IB, ELISA, CMIA, WB
CPV Antibody	BMGCPV21	Monoclonal	Mouse	Capture	LF, IFA, IB, ELISA, CMIA, WB
CPV Antibody	BMGCPV22	Monoclonal	Mouse	Conjugation	LF, IFA, IB, ELISA, CMIA, WB
CPV Antigen	APR010201	Antigen	E.coli	Calibrator	LF, IFA, IB, ELISA, CMIA, WB

Canine Distemper Virus(CDV)

Product Name	Catalog	Type	Host/Source	Usage	Applications
CDV Antibody	BMGCDV11	Monoclonal	Mouse	Capture	LF, IFA, IB, ELISA, CMIA, WB
CDV Antibody	BMGCDV12	Monoclonal	Mouse	Conjugation	LF, IFA, IB, ELISA, CMIA, WB
CDV Antigen	APR030101	Antigen	E.coli	Calibrator	LF, IFA, IB, ELISA, CMIA, WB

Canine Reactive Protein(C-CRP)

Product Name	Catalog	Type	Host/Source	Usage	Applications
C-CRP Antibody	BMGCRP11	Monoclonal	Mouse	Capture	LF, IFA, IB, ELISA, CMIA, WB
C-CRP Antibody	BMGCRP12	Monoclonal	Mouse	Conjugation	LF, IFA, IB, ELISA, CMIA, WB
C-CRP Antigen	APR130201	Antigen	E.coli	Calibrator	LF, IFA, IB, ELISA, CMIA, WB

Canine Coronavirus(CCV)

Product Name	Catalog	Type	Host/Source	Usage	Applications
CCV Antibody	BMGCCV11	Monoclonal	Mouse	Capture	LF, IFA, IB, ELISA, CMIA, WB
CCV Antibody	BMGCCV12	Monoclonal	Mouse	Conjugation	LF, IFA, IB, ELISA, CMIA, WB
CCV Antibody	BMGCCV21	Monoclonal	Mouse	Capture	LF, IFA, IB, ELISA, CMIA, WB
CCV Antibody	BMGCCV22	Monoclonal	Mouse	Conjugation	LF, IFA, IB, ELISA, CMIA, WB

Canine Rota Virus(Rota)

Product Name	Catalog	Type	Host/Source	Usage	Applications
Rota Antibody	BMGROT11	Monoclonal	Mouse	Capture	LF, IFA, IB, ELISA, CMIA, WB
Rota Antibody	BMGROT12	Monoclonal	Mouse	Conjugation	LF, IFA, IB, ELISA, CMIA, WB
Rota Antigen	APR050101	Antigen	E.coli	Calibrator	LF, IFA, IB, ELISA, CMIA, WB

Rabies Virus(Rv)

Product Name	Catalog	Type	Host/Source	Usage	Applications	epitope
RV Antigen	BMGVRV11	Antigen	E.coli	Capture/Conjugation	LF, IFA, IB, ELISA, CMIA, WB	N
RV Antigen	BMGVRV21	Antigen	E.coli	Capture/Conjugation	LF, IFA, IB, ELISA, CMIA, WB	G
RV Antigen	BMGVRV22	Antigen	HEK293 Cell	Capture/Conjugation	LF, IFA, IB, ELISA, CMIA, WB	G

Toxoplasma(TOXO)

Product Name	Catalog	Type	Host/Source	Usage	Applications	epitope
Toxo Antigen	BMGVT011	Antigen	E.coli	Capture/Conjugation	LF, IFA, IB, ELISA, CMIA, WB	P ₃₀

Canine Serum Amyloid A(C-SAA)

Product Name	Catalog	Type	Host/Source	Usage	Applications
SAA Antibody	BMGSAA11	Monoclonal	Mouse	Capture	LF, IFA, IB, ELISA, CMIA, WB
SAA Antibody	BMGSAA12	Monoclonal	Mouse	Conjugation	LF, IFA, IB, ELISA, CMIA, WB
SAA Antigen	APR160201	Antigen	E.coli	Calibrator	LF, IFA, IB, ELISA, CMIA, WB

Canine Adeno Virus(CAV)

Product Name	Catalog	Type	Host/Source	Usage	Applications
CAV Antibody	BMHCAV11	Monoclonal	Mouse	Capture	LF, IFA, IB, ELISA, CMIA, WB
CAV Antibody	BMHCAV12	Monoclonal	Mouse	Conjugation	LF, IFA, IB, ELISA, CMIA, WB

Canine Influenza Virus(CIV)

Product Name	Catalog	Type	Host/Source	Usage	Applications
CIV Antibody	BMGCIN11	Monoclonal	Mouse	Capture	LF, IFA, IB, ELISA, CMIA, WB
CIV Antibody	BMGCIN12	Monoclonal	Mouse	Conjugation	LF, IFA, IB, ELISA, CMIA, WB

Canine Heartworm Virus(CHW)

Product Name	Catalog	Type	Host/Source	Usage	Applications
CHW Antibody	BMGCHV11	Monoclonal	Mouse	Capture	LF, IFA, IB, ELISA, CMIA, WB
CHW Antibody	BMGCHV12	Monoclonal	Mouse	Conjugation	LF, IFA, IB, ELISA, CMIA, WB

Mouse anti-Canine IgG

Product Name	Catalog	Type	Host/Source	Usage	Applications
Canine IgG Antibody	BMGCIG11	Monoclonal	Mouse	Capture/Conjugation	LF, IFA, IB, ELISA, CMIA, WB

Mouse anti-Canine IgM

Product Name	Catalog	Type	Host/Source	Usage	Applications
Canine IgM Antibody	BMGCIM11	Monoclonal	Mouse	Capture/Conjugation	LF, IFA, IB, ELISA, CMIA, WB





Feline Viral Infectious Disease

In recent years, due to the expansion of solitary groups and the improvement of people's social life quality, more and more people keep pets in society. But as life stress increases, people have no time to walk their dogs and play with their pet dogs, which makes people to choose to keep cats that are relatively less accompanied as pets.

Although owners spare no effort to love them, aging cats and changes in their dietary structure are prone to a variety of diseases. The most common infectious diseases such as: plague fever, influenza, parvovirus and coronavirus, which seriously endanger the health of pets, and sometimes spread to cat owners. Pets differ from people in that they cannot seek help from pet owners in a timely manner when they are uncomfortable, and when they appear significantly different, the condition has been more serious. So it is particularly important to select a rapid and accurate detection method.

Feline Parvovirus(FPV)

Product Name	Catalog	TYPE	Host/Source	Usage	Applications
FPV Antibody	BMGFPV11	Monoclonal	Mouse	Capture	LF, IFA, IB, ELISA, CMIA, WB
FPV Antibody	BMGFPV12	Monoclonal	Mouse	Conjugation	LF, IFA, IB, ELISA, CMIA, WB

Feline Immunodeficiency Virus(FIV)

Product Name	Catalog	TYPE	Host/Source	Usage	Applications
FIV Antibody	BMGFIV11	Monoclonal	Mouse	Capture	LF, IFA, IB, ELISA, CMIA, WB
FIV Antibody	BMGFIV12	Monoclonal	Mouse	Conjugation	LF, IFA, IB, ELISA, CMIA, WB
FIV Antigen	APR090101	Antigen	E.coli	Calibrator	LF, IFA, IB, ELISA, CMIA, WB

Feline Calicivirus(FCV)

Product Name	Catalog	TYPE	Host/Source	Usage	Applications
FCV Antibody	BMGFCV11	Monoclonal	Mouse	Capture	LF, IFA, IB, ELISA, CMIA, WB
FCV Antibody	BMGFCV12	Monoclonal	Mouse	Conjugation	LF, IFA, IB, ELISA, CMIA, WB

Feline Herpes Virus (FHV)

Product Name	Catalog	TYPE	Host/Source	Usage	Applications
FHV Antibody	BMGFHV11	Monoclonal	Mouse	Capture	LF, IFA, IB, ELISA, CMIA, WB
FHV Antibody	BMGFHV12	Monoclonal	Mouse	Conjugation	LF, IFA, IB, ELISA, CMIA, WB
FHV Antigen	APR120101	Antigen	E.coli	Calibrator	LF, IFA, IB, ELISA, CMIA, WB

Feline Coronavirus Virus(FCoV)

Product Name	Catalog	TYPE	Host/Source	Usage	Applications
FCoV Antibody	BMGCOV11	Monoclonal	Mouse	Capture	LF, IFA, IB, ELISA, CMIA, WB
FCoV Antibody	BMGCOV12	Monoclonal	Mouse	Conjugation	LF, IFA, IB, ELISA, CMIA, WB

Feline Leukemia Virus(FeLV)

Product Name	Catalog	TYPE	Host/Source	Usage	Applications
FeLV Antibody	BMGFLV11	Monoclonal	Mouse	Capture	LF, IFA, IB, ELISA, CMIA, WB
FeLV Antibody	BMGFLV12	Monoclonal	Mouse	Conjugation	LF, IFA, IB, ELISA, CMIA, WB

Feline Giardia Virus(Giardia)

Product Name	Catalog	TYPE	Host/Source	Usage	Applications
Giardia Antibody	BMGGIA11	Monoclonal	Mouse	Capture	LF, IFA, IB, ELISA, CMIA, WB
Giardia Antibody	BMGGIA12	Monoclonal	Mouse	Conjugation	LF, IFA, IB, ELISA, CMIA, WB

Mouse anti-Feline IgM

Product Name	Catalog	TYPE	Host/Source	Usage	Applications
Feline IgM Antibody	BMGFIM11	Monoclonal	Mouse	Capture/Conjugation	LF, IFA, IB, ELISA, CMIA, WB

Feline Serum Amyloid A(F-SAA)

Product Name	Catalog	TYPE	Host/Source	Usage	Applications
SAA Antibody	BMGGIA11	Monoclonal	Mouse	Capture	LF, IFA, IB, ELISA, CMIA, WB
SAA Antibody	BMGGIA12	Monoclonal	Mouse	Conjugation	LF, IFA, IB, ELISA, CMIA, WB



Swine Viral Infectious Disease

At present, the epidemic of swine disease in pig farms is mainly caused by multiple or mixed infections of pathogens, which is easy to cause high morbidity and mortality of pig herds in summer and autumn hot seasons, and causing different degrees of economic losses to some pig farmers. The epidemic of swine disease is often not caused by a single pathogen, but by the synergistic effect of two or more pathogens with each other. Many epidemic diseases have similar clinical symptoms and cannot be generalized based on clinical diagnosis alone, and often only one cause can be judge. Ignoring the primary or secondary causes, or only considering bacterial infection, will easily lead to misdiagnosis, delay the time of prevention and control, and cause great losses in pig farms.

Porcine Reproductive and Respiratory Syndrome Virus(PRRSV)

Product Name	Catalog	TYPE	Host/Source	Usage	Applications	Epitope
PRRSV Antigen	BMGPRR11	Antigen	E.coli	Capture	LF, IFA, IB, ELISA, CMIA, WB	N
PRRSV Antigen	BMGPRR12	Antigen	E.coli	Conjugation	LF, IFA, IB, ELISA, CMIA, WB	N
PRRSV Antigen	BMGPRR21	Antigen	E.coli	Capture	LF, IFA, IB, ELISA, CMIA, WB	GP _s
PRRSV Antigen	BMGPRR22	Antigen	E.coli	Conjugation	LF, IFA, IB, ELISA, CMIA, WB	GP _s

Classical Swine Fever Virus(CSFV)

Product Name	Catalog	TYPE	Host/Source	Usage	Applications	Epitope
SFV Antigen	BMGSFV11	Antigen	E.coli	Capture/Conjugation	LF, IFA, IB, ELISA, CMIA, WB	E
SFV Antigen	BMGSFV21	Antigen	HEK293 Cell	Capture/Conjugation	LF, IFA, IB, ELISA, CMIA, WB	E

African Swine Fever Virus(ASFV)

Product Name	Catalog	TYPE	Host/Source	Usage	Applications	Epitope
ASFV Antigen	BMGASF11	Antigen	E.coli	Capture/Conjugation	LF, IFA, IB, ELISA, CMIA, WB	P ₃₀
ASFV Antigen	BMGASF12	Antigen	E.coli	Capture/Conjugation	LF, IFA, IB, ELISA, CMIA, WB	P ₃₀
ASFV Antigen	BMGASF13	Antigen	HEK293 Cell	Capture/Conjugation	LF, IFA, IB, ELISA, CMIA, WB	P ₃₀
ASFV Antigen	BMGASF21	Antigen	E.coli	Capture/Conjugation	LF, IFA, IB, ELISA, CMIA, WB	P ₇₂
ASFV Antigen	BMGASF22	Antigen	E.coli	Capture/Conjugation	LF, IFA, IB, ELISA, CMIA, WB	P ₇₂
ASFV Antigen	BMGASF23	Antigen	HEK293 Cell	Capture/Conjugation	LF, IFA, IB, ELISA, CMIA, WB	P ₇₂
ASFV Antigen	BMGASF31	Antigen	HEK293 Cell	Capture/Conjugation	LF, IFA, IB, ELISA, CMIA, WB	P ₅₄
ASFV Antibody	BMGASM11	Monoclonal	mouse	Capture/Conjugation	LF, IFA, IB, ELISA, CMIA, WB	P ₃₀
ASFV Antibody	BMGASM12	Monoclonal	mouse	Capture/Conjugation	LF, IFA, IB, ELISA, CMIA, WB	P ₃₀

Pseudorabies Virus(PRV)

Product Name	Catalog	TYPE	Host/Source	Usage	Applications	Epitope
PRV Antigen	BMGPRV11	Antigen	HEK293 Cell	Capture/Conjugation	LF, IFA, IB, ELISA, CMIA, WB	gB



Bovine Viral Infectious Disease

Bovine epidemic diseases are diseases that all farmers are afraid of after listening to, because most epidemic diseases are infectious, once the disease occurs, it will cause serious economic losses, and the whole farm may be infected if the prevention and control are not timely. Common diseases are foot-and-mouth disease, bovine viral diarrhea, mange and traumatic reticulopericarditis. Based on the fluorescence immunochromatography rapid detection technology platform, we introduced a series of rapid quantitative detection products of antigens and antibodies, which can quickly and quantitatively determine the content of pathogens or antibodies in bovine blood. The operation is quick, simple and sensitive, and it is suitable for breeding enterprises, third-party detection institutions and relevant government regulatory authorities.

Foot and Mouth Disease(FMDV)

Product Name	Catalog	TYPE	Host/Source	Usage	Applications	Epitope	Type
FMDV Antigen	BMGFMO11	Antigen	E.coli	Capture	LF, IFA, IB, ELISA, CMIA, WB	VP	O type
FMDV Antigen	BMGFMO12	Antigen	E.coli	Conjugation	LF, IFA, IB, ELISA, CMIA, WB	VP	O type
FMDV Antigen	BMGFMA11	Antigen	E.coli	Capture	LF, IFA, IB, ELISA, CMIA, WB	VP ₁	A type
FMDV Antigen	BMGFMA12	Antigen	E.coli	Conjugation	LF, IFA, IB, ELISA, CMIA, WB	VP ₁	A type
FMDV Antigen	BMGFMA21	Antigen	E.coli	Capture	LF, IFA, IB, ELISA, CMIA, WB	VP ₂ +VP ₃	A type
FMDV Antigen	BMGFMA22	Antigen	E.coli	Conjugation	LF, IFA, IB, ELISA, CMIA, WB	VP ₂ +VP ₃	A type

Infectious Bovine Rhinotracheitis Virus(IBR)

Product Name	Catalog	TYPE	Host/Source	Usage	Applications	Epitope
IBR Antigen	BMGIBR11	Antigen	E.coli	Capture	LF, IFA, IB, ELISA, CMIA, WB	gD
IBR Antigen	BMGIBR12	Antigen	E.coli	Conjugation	LF, IFA, IB, ELISA, CMIA, WB	gD
IBR Antigen	BMGIBR21	Antigen	E.coli	Capture	LF, IFA, IB, ELISA, CMIA, WB	gB
IBR Antigen	BMGIBR22	Antigen	E.coli	Conjugation	LF, IFA, IB, ELISA, CMIA, WB	gB
IBR Antigen	BMGIBR31	Antigen	E.coli	Capture	LF, IFA, IB, ELISA, CMIA, WB	gE
IBR Antigen	BMGIBR32	Antigen	E.coli	Conjugation	LF, IFA, IB, ELISA, CMIA, WB	gE

Bovine Viral Diarrhea Virus(BVDV)

Product Name	Catalog	TYPE	Host/Source	Usage	Applications	Epitope
BVDV Antigen	BMGBVD11	Antigen	E.coli	Capture	LF, IFA, IB, ELISA, CMIA, WB	E
BVDV Antigen	BMGBVD12	Antigen	E.coli	Conjugation	LF, IFA, IB, ELISA, CMIA, WB	E
BVDV Antigen	BMGBVD21	Antigen	E.coli	Capture	LF, IFA, IB, ELISA, CMIA, WB	gD
BVDV Antigen	BMGBVD22	Antigen	E.coli	Conjugation	LF, IFA, IB, ELISA, CMIA, WB	gD
BVDV Antigen	BMGBVD31	Antigen	E.coli	Capture	LF, IFA, IB, ELISA, CMIA, WB	P ₈₀
BVDV Antigen	BMGBVD32	Antigen	E.coli	Conjugation	LF, IFA, IB, ELISA, CMIA, WB	P ₈₀



Goat Viral Infectious Disease

Peste des petits ruminants, infectious pleuropneumonia in goats, goatpox, ovine aphthae, foot-and-mouth disease, ovine brucellosis, ovine pseudo-tuberculosis and related diseases caused by *Clostridium perfringens* are currently serious diseases in large-scale sheep farms and will bring greater economic losses to the sheep industry.

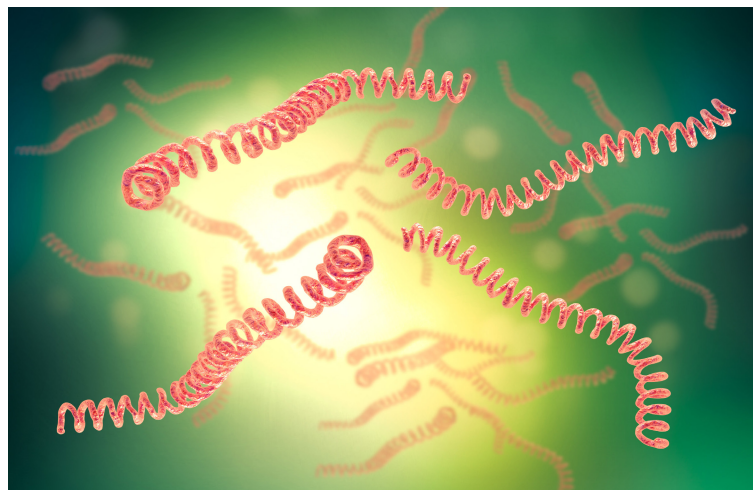
Peste des petits ruminants, commonly known as sheep plague, can have an infection rate of up to 100%. Goat Pox, which has a fatality rate of up to 90%, can be transmitted through various routes such as airborne transmission, mosquito bites, and body fluid contact, resulting in decreased milk yield in dairy goats and abortion during pregnancy in ewes. At present, epidemic diseases are still an important factor affecting the development of sheep industry. Doing a good job in immune prevention, regularly detecting antibody levels, and formulating more perfect prevention and control measures are still the top priority of epidemic disease prevention and control in large-scale sheep farms.

Peste Des Petits Ruminants(PPR)

Product Name	Catalog	TYPE	Host/Source	Usage	Applications	Epitope
PPR Antigen	BMGPPR11	Antigen	E.coli	Capture/Conjugation	LF, IFA, IB, ELISA, CMIA, WB	N
PPR Antigen	BMGPPR12	Antigen	E.coli	Capture/Conjugation	LF, IFA, IB, ELISA, CMIA, WB	N

Sheep/Goat Pox Virus(Qrf)

Product Name	Catalog	TYPE	Host/Source	Usage	Applications	Epitope
Qrf Antigen	BMGQRF11	Antigen	E.coli	Capture/Conjugation	LF, IFA, IB, ELISA, CMIA, WB	$L_1 + P_{32} + A_{33}$
Qrf Antigen	BMGQRF21	Antigen	E.coli	Capture/Conjugation	LF, IFA, IB, ELISA, CMIA, WB	$L_1 + P_{32} + A_{33}$



Other Infectious Disease

Hydatidosis (Hydatid disease), also known as echinococcosis, is a disease caused by the infection of the human body by the larvae of *Echinococcus granulosus*. The disease is zoonotic, dogs are definitive hosts, sheep and cattle are intermediate hosts, and humans suffer from echinococcosis due to accidental ingestion of eggs as intermediate hosts. The disease is widespread around the world and is mainly endemic in animal husbandry areas. The course of the disease is slow, the incubation period is 1 ~ 30 years. With the gradual growth of the cyst, the space-occupying compression symptoms of the parasitic site and systemic toxicity symptoms gradually become obvious. At present, the diagnosis of echinococcosis depends largely on imaging and etiology, and the detection of markers by colloidal gold method or enzyme-linked immunosorbent assay is an important means to assist in the diagnosis of echinococcosis.

Leptospirosis is an acute systemic infectious disease caused by various types of pathogenic *Leptospira*, which is a natural epidemic disease. Mice and pigs are the two main sources of infection and are prevalent worldwide, especially in the tropics and subtropics. The disease has been found in 28 provinces, municipalities, and autonomous regions in China, and sporadic cases have been seen throughout the year in areas with high temperatures. The clinical manifestations are complex, so it is necessary to detect pathogens in time in the early stage. Combining epidemiological characteristics, early clinical characteristics and laboratory tests for comprehensive analysis, and differentiate them from other diseases.

Hydatid Disease

Product Name	Catalog	TYPE	Host/Source	Usage	Applications	Epitope	TYPE
Echinococcosis Antigen	BMGHDG11	Antigen	E.coli	Capture/Conjugation	LF, IFA, IB, ELISA, CMIA, WB	P ₁₇₅ , P ₁₇₆	Granulosus
Echinococcosis Antigen	BMGHDG12	Antigen	E.coli	Capture/Conjugation	LF, IFA, IB, ELISA, CMIA, WB	AgB	Granulosus
Echinococcosis Antigen	BMGHDG13	Antigen	E.coli	Capture/Conjugation	LF, IFA, IB, ELISA, CMIA, WB	Eg ₉₅	Granulosus
Echinococcosis Antigen	BMGHDM11	Antigen	E.coli	Capture/Conjugation	LF, IFA, IB, ELISA, CMIA, WB	Em ₁₈	Multilocularis

Leptospirosis

Product Name	Catalog	TYPE	Host/Source	Usage	Applications	Epitope
Leptospira Antigen	BMGLEP11	Antigen	E.coli	Capture	LF, IFA, IB, ELISA, CMIA, WB	LipL
Leptospira Antigen	BMGLEP12	Antigen	E.coli	Conjugation	LF, IFA, IB, ELISA, CMIA, WB	LipL
Leptospira Antigen	BMGLEP21	Antigen	E.coli	Capture	LF, IFA, IB, ELISA, CMIA, WB	LigA
Leptospira Antigen	BMGLEP22	Antigen	E.coli	Conjugation	LF, IFA, IB, ELISA, CMIA, WB	LigA

Brucella

Product Name	Catalog	TYPE	Host/Source	Usage	Applications	Epitope
Brucella Antigen	BMGBUR11	Antigen	E.coli	Capture/Conjugation	LF, IFA, IB, ELISA, CMIA, WB	OMP
Brucella Antigen	BMGBUR21	Antigen	E.coli	Capture/Conjugation	LF, IFA, IB, ELISA, CMIA, WB	SOD

Explore The Art Of Living Together



@BioMapper



@bio-mapper

Following Us!





www.bio-mapper.com



Call: +86 151 6850 0284

Tel: +86 574 2799 8743



Email: info@bio-mapper.com



Add: 17th Floor, NO.2 Building, WeeGi-Yunhui Center, NO.299 Tongji Road, Jiangbei District, Ningbo City, Zhejiang Province, China.



BIO-MAPPER

Explore The Art Of Living Together