

BIO-MAPPER

Bio-Mapper Technology Co.Ltd., was founded in 2018, is a professional supplier of in vitro diagnostic (IVD) reagents raw materials. It is committed to providing high-quality antigens, antibodies and other bioactive raw materials and related auxiliary products services for global IVD reagent manufacturers.

Bio-Mapper takes immunodiagnosis as the technical core, mainly involving the fields including major animal infectious diseases, animal respiratory diseases, animal digestive tract diseases and animal allergen series. It has established a comprehensive and leading diagnostic R & D, production and application of platform, and implemented a perfect technology development process. Bio-Mapper covers many application platforms, such as ELISA, LFJIB, IFA,LTIA, WB, CLIA, CMIA,efficiently serves and improves the development of IVD industrial products and product performance level in China.Bio-Mapper will supply the high quality products and complete solution to the industry as well as the shared-values.Bio-Mapper hopes that will be benefit more people and be advanced to cause of human-health by making the developments of diagnostic technologies.



BIO-MAPPER

Veterinary Diagnostic Series

Uncut Sheet Catalogue

Explore The Art Of Living Together

www.bio-mapper.com



www.bio-mapper.com



Call: +86 151 6850 0284

Tel: +86 574 2799 8743



Email: info@bio-mapper.com



Add: 17th Floor, NO.2 Building, NO.299 Tongji Road, Jiangbei District, Ningbo City, Zhejiang Province, China.



@BioMapper



@bio-mapper

Canine Disease Test

Product Name	Catalog	Specimen
CPV Antigen Rapid Test	RPA0111	Body Secretion
Canine CRP Antigen Rapid Test	RPA0211	Feces
CDV Antigen Rapid Test	RPA0311	Feces
CCV Antigen Rapid Test	RPA0411	Body Secretion
Canine Influa Antigen Rapid Test	RPA0511	Feces
CCV/CPV Antigen Rapid Test	RPA0121	Body Secretion
Rota virus Antigen Rapid Test	RPA0611	Feces
CHW Antigen Rapid Test	RPA0711	WB/S/P
CDV Antibody Test	RPA0321	WB/S/P
CPV Antibody Test	RPA0131	WB/S/P
CPV/CDV Antibody Test	RPA0141	WB/S/P

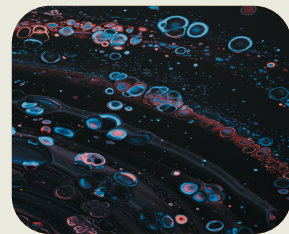


Feline Disease Test

Product Name	Catalog	Specimen
FPV Antigen Rapid Test	RPA0911	Feces
FIV Antigen Rapid Test	RPA1011	WB/S/P
FeLV Antigen Rapid Test	RPA1111	WB/S/P
FCV Antigen Rapid Test	RPA1211	Body Secretion
FHV Antigen Rapid Test	RPA1311	Body Secretion
FCoV Antigen Rapid Test	RPA1411	Feces
FIV Antibody Rapid Test	RPA1021	WB/S/P
FIV Ag/Ab Rapid Test	RPA1031	WB/S/P
FeLV Ag/FIV Ab Rapid Test	RPA1041	WB/S/P

Livestock Diagnosis

Product Name	Catalog	Specimen
PEDV IgA Antibody Test	REA1111	WB/S/P/Colostrum sample
PEDV Antibody Test	REA1121	WB/S/P
PRV gB Antibody Test	REA0411	WB/S/P
CSFV Antibody Test	REA0111	WB/S/P
ASFV Antibody Test	REA0211	WB/S/P
PRRSV Antibody Test	REA0311	WB/S/P/Colostrum sample
Hydatid Disease Antibody Test	REA0711	WB/S/P
IBRV gE Antibody Test	REA1211	WB/S/P/Milk
IBRV gB Antibody Test	REA1221	WB/S/P/Colostrum sample
BVDV P80 Antibody Test	REA0611	WB/S/P/Milk
BVDV gD Antibody Test	REA0621	WB/S/P/Milk
BVDV Antibody Test	REA0631	WB/S/P/Milk
FMDV Antibody Test	REA0511	WB/S/P
Qrf Antibody Test	REA0911	WB/S/P
PPRV Antibody Test	REA0811	WB/S/P



Parasitic Disease and Others

Product Name	Catalog	Specimen
TOXO Antibody Test	RPA0711	WB/S/P
Leptospira IgG/IgM Rapid Test	RPA1311	WB/S/P
Leptospira Antibody Rapid Test	RPA1321	WB/S/P
Leishmania IgG/IgM Rapid Test	RPA1411	WB/S/P
Leishmania Antibody Rapid Test	RPA1421	WB/S/P
Brucella Antibody Rapid Test	RPA1511	WB/S/P
Rota virus Antigen Rapid Test	RPA0611	Feces